

MC-C02

Gynecological Exam Table



*Better care
Better comfort!*

MC-C02

GYNECOLOGICAL EXAM TABLE

DESCRIPTION

MC-C02B is an all-round gynecological examination table with multiple body position adjustments and a collection of various accessories. It is also equipped with an extra-large storage space and external power supply function. It can almost meet all the needs of daily gynecological examinations and bring a humanized experience to both doctors and patients.

FEATURES

- Structure made of steel with powder coating surface, corrosion resistant and easy to clean
- The backboard is adjustable, the legboard is retractable, and it is equipped with leg rest to adapt to various examination positions
- Extra-large storage space
- Equipped with an external power supply function to facilitate the connection of other electrical appliances
- With examination light, paper roll holder and foot step for easy use

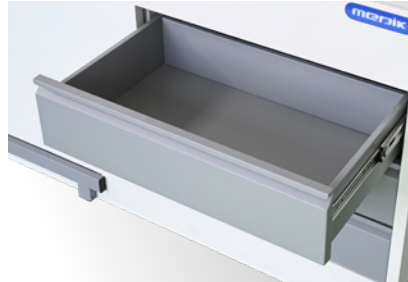
TECHNICAL PARAMETER

Model	MC-C02
Overall size(L*W*H)	1870x600x680mm
Back section up/down	0-75°±5°
Safe working load	150kg
Capacity of filth basin	5~6L



Back section adjustment

Back section can be adjusted by ratchet.



Drawers

Has large capacity drawers that can be used to place inspection instruments and documents.



Leg support

Equipped with leg support, the height and angle can be adjusted.



Lamp

Gooseneck examination light with multi angle.



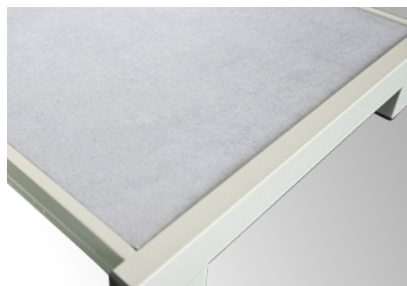
Foot section

Foot section can be hidden under the seat section, will be level with the lying surface when it is unfolded, also with filth basin.



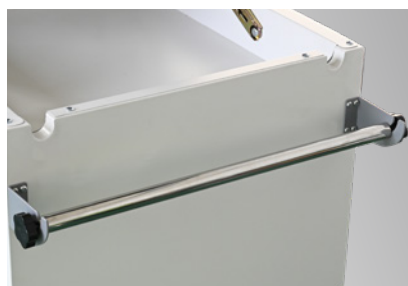
Structure

Base cabinet structure is made of steel material with powder coating finishing, corrosion resistant and easy to clean.



Foot step

Anti-slip footrest makes it easier for patients to get in and out of bed.



Paper roll holder

Detachable paper roll holder for easy use.



Power outlet

Equipped with external power supply and multiple sockets, convenient for connecting other electrical appliances required for examination.

ABOUT US

Zhangjiagang Medi Medical Equipment Co.,Ltd, founded in 1995, with more than 20 years experience in developing hospital furniture, is one of the largest manufacturer of hospital bed, patient stretcher, medical cart and other related hospital furniture in China or even Asia.

Through scientific management complying with ISO9001&ISO13485, by adopting advanced facility like Germany TRUMPF CNC, Japan OTC Robot Welding, Auto-power coating line with Swiss GEMA gun , Medi focuses on providing brand quality product with CE approval.

Headquartered in Zhangjiagang nearby Shanghai, with subsidiary oversea offices in Hungary, Dubai, Thailand, New Zealand, Kenya, Colombia, Medi acting professionally and swiftly for both pre-sales and after-sales.The products are widely accepted by global clients, such as UK RIE hospital, UNIVERZITETNI KLINICNI CENTER, Kokilaben Dhirubhai Ambani Hospital, Singapore National University Hospital etc.



YOU TUBE



MEDIK

Pls scan the QR code for more info

info@medik-medical.com | +86 139 6223 1292

Medik reserves the right to make changes without notice in design, specifications and models. The only warranty Medik makes is the express written warranty extended on the sale or rental of its products.

© 2022 Medik Services, Inc. ALL RIGHTS RESERVED. APR53703 rev 1 01-JAN-2022 ENG – US